

# Getting Started with *Simply Cloud9*

1. Open Internet Explorer. **Please note:** if you wish to use other internet browsers, such as Firefox, or Google Chrome, you will need to install the “Internet Explorer Tabs” add-in ([www.ietab.net](http://www.ietab.net)).
2. Navigate to [login.cloud9realtime.com](http://login.cloud9realtime.com). See Figure 1.



Figure 1

3. Enter your Username and Password in the boxes at the login prompt. See Figure 2.

**Help**

Username:

Password:

---

Security ([show explanation](#))

This is a private computer

This is a public or shared computer

---

To protect against unauthorized access, your session will automatically time out after a period of inactivity. If your session ends, refresh your browser and sign in again.

Figure 2

4. Below the username and password boxes, please select the appropriate security option, if you are on a computer that is not used by anyone else, you can select “**This is a private computer**”, and otherwise you will want to select “**This is a public or shared computer.**” If you need further information regarding these choices you can click on the “**show explanation**” link. See Figure 2.

# Getting Started with *Simply Cloud9*

---

5. Click the “Sign In” button. [See Figure 2.](#)
6. Once the web application is loaded and you are successfully signed in, you will be presented with icon links to the applications that are installed with your Simply Cloud9 service. Click once on an application icon to launch that application.
7. You will be prompted to enter your credentials in order to launch the application; click the “Use other account” in the Windows Security prompt, and enter “**CLOUD9\{username}**” in the username box, where **{username}** is the username for your account, and enter your password in the password box, then click “OK”. [See Figure 3.](#)

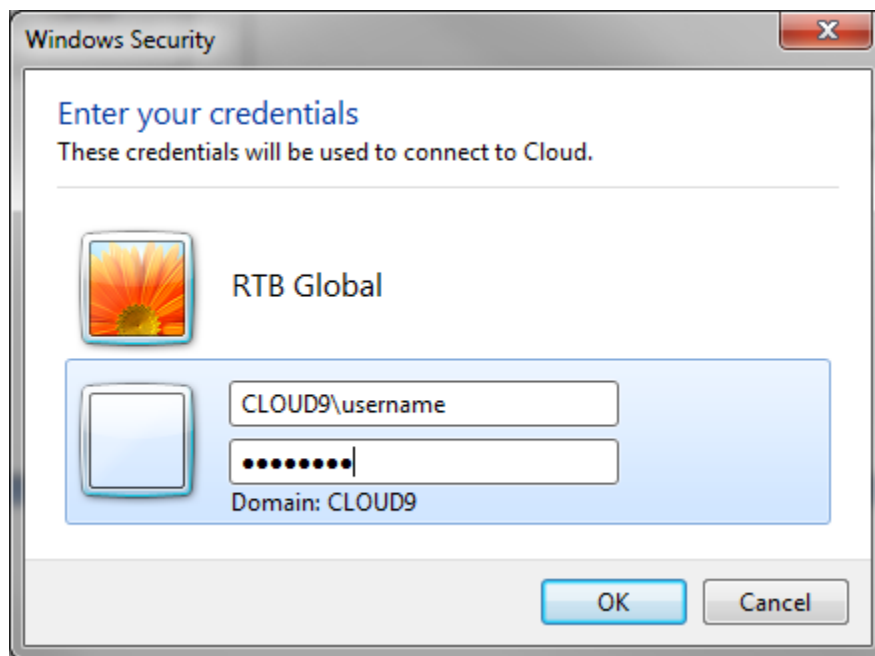


Figure 3

# Getting Started with *Simply Cloud9*

---

8. The first time you launch an application from Simply Cloud9 it may prompt you to accept the security certificate from our servers, you can check the box that says **“Don’t ask me again for connections to this computer”** if you no longer wish to be prompted. Click the **“Yes”** button to continue launching your application. [See Figure 4.](#)

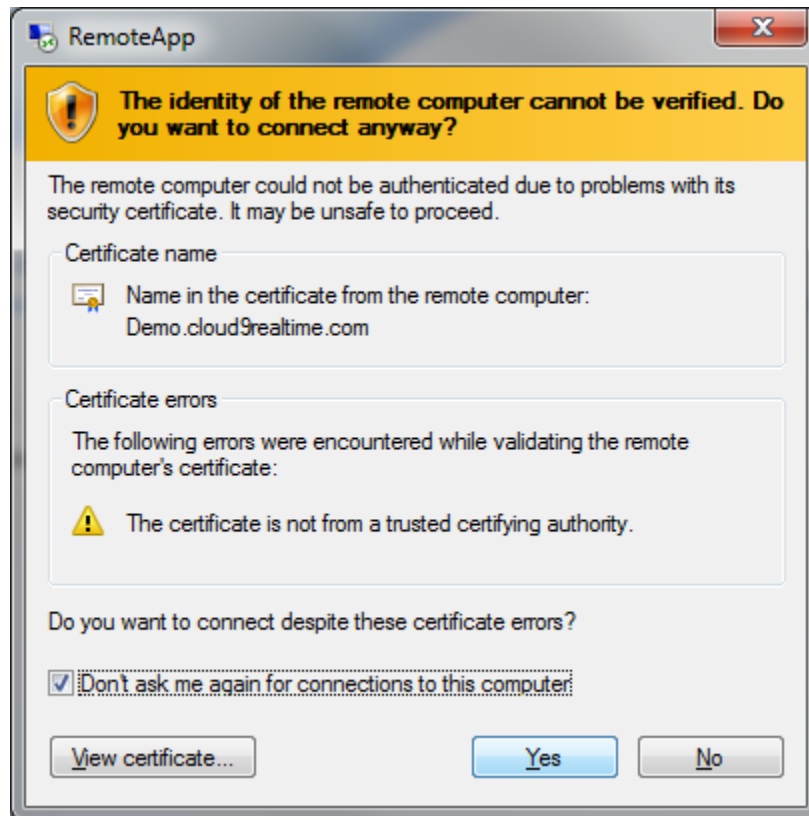


Figure 4